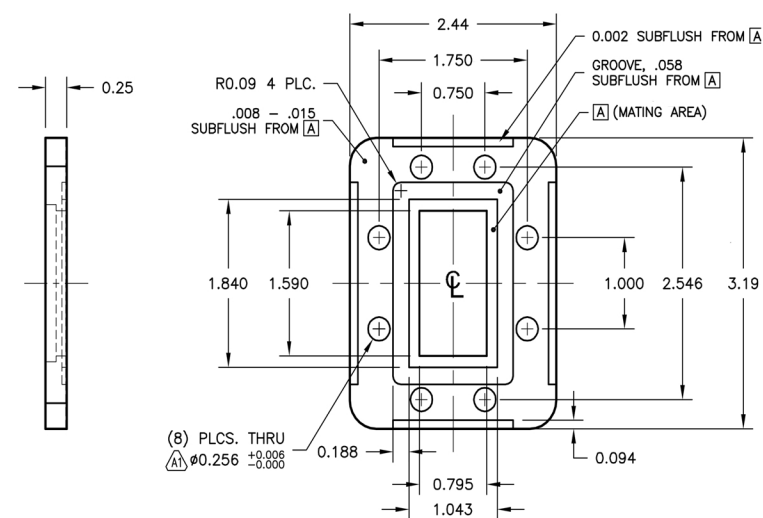


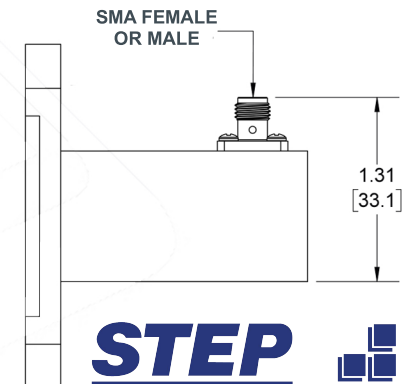
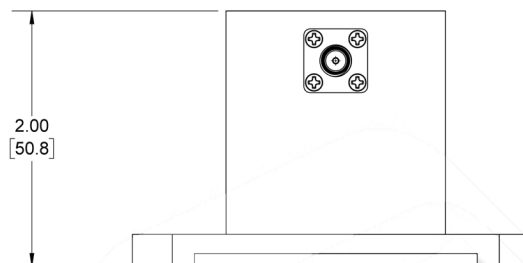
WR159 CPRF FLANGE



WR159 CPRG FLANGE

SPECS

WAVEGUIDE SIZE: WR159
FREQUENCY: 4.9-7.05 GHZ
VSWR: 1.25:1
CONNECTOR: SMA, F OR M
MATERIAL: 6061 ALUMINUM
FINISH: BLUE ANODIZE



Type	Order Code
WR159 WG to coax adapter (F)	AST1061-4R-F (FEMALE CONNECTOR,CPRF FLANGE)
WR159 WG to coax adapter (M)	AST1061-4G-M (MALE CONNECTOR,CPRG FLANGE)

FLANGE CODES: CPRF=R, CPRG=G

REVISIONS		APPROVALS			
SYM	DESCRIPTION	DATE	ENGR	PROD	Q.A.

PROPRIETARY INFORMATION
THIS DOCUMENT CONTAINS PROPRIETARY INFORMATION
WHICH SHALL NOT BE REPRODUCED, TRANSFERRED TO
OTHER DOCUMENTS, DISCLOSED TO OTHERS, USED FOR
MANUFACTURING OR ANY OTHER PURPOSE WITHOUT
PRIOR WRITTEN PERMISSION FROM AST.

BREAK ALL CORNERS AND SHARP EDGES

UNLESS OTHERWISE SPECIFIED	DRAWN	CHECKER	MECH. ENGR.	ELEC. ENGR.	PROJ. ENGR.	CHIEF ENGR.
FRACTIONAL ± 1/32						
DECIMAL .XXX ± .010						
ANGULAR .XX ± .020						

WR159
WAVEGUIDE TO COAXIAL
ADAPTER (SMA)

DRAWING # AST1061-4

SCALE NTS

SHEET 1 OF 1

STEP
ELECTRONICS
A Division of Av-Comm