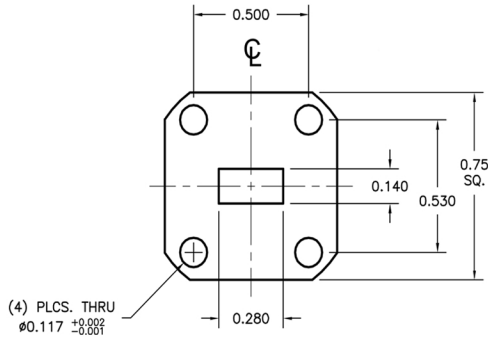
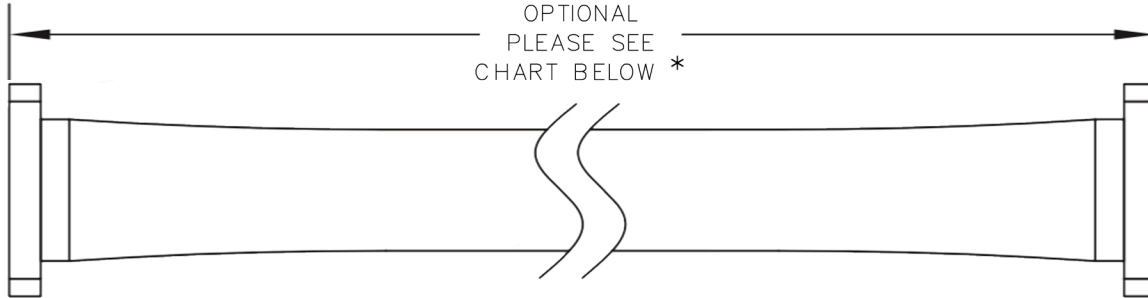
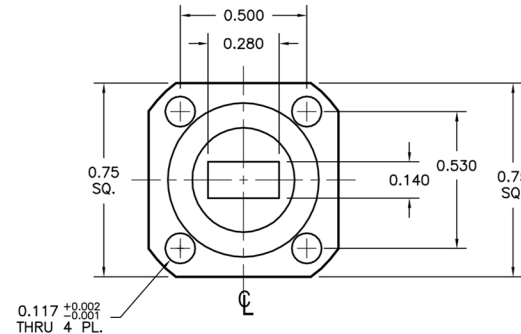


OPTIONAL  
PLEASE SEE  
CHART BELOW \*



COVER FLANGE



GROOVED FLANGE

**MECHANICAL SPECS:**

BENDING RATING (Rad (in)):  
 STATIC-E-PLANE: 0.7 H-PLANE: 1.0  
 REPEATED-E-PLANE: 2.8 H-PLANE: 4.0  
 TWISTING RATING (±deg/ft):  
 STATIC: TOLERANCE-180  
 TWIST: 70  
 MAX OPERATING PRESSURE: 45 PSIG  
 \*AVAILABLE LENGTHS: 4", 6", 8", 12", 18", 24", 36"  
 AVAILABLE JACKETS: NEOPRENE (N)  
 FLANGE THICKNESS: 0.190"

**ELECTRICAL SPECS:**

OPERATING FREQUENCY: 26.5 - 40.0 GHZ  
 MAXIMUM IL ATTENUATION db/ft: 0.60  
 MAXIMUM VSWR: <36" COVER FLANGE - 1.19  
 PLAIN/CHOKE FLANGES: 1.30  
 POWER RATING CW (kW): 0.10

ORDERING INFORMATION				
MODEL #	W/G SIZE	LENGTH (in or MMS)	FLANGE 1	FLANGE 2
AST1640	13	OPTIONAL	O=O-RING F=FLAT	O=O-RING F=FLAT

SAMPLE: AST1640-13-18-0-F  
 18" WR28 FLEX W/ ORING & FLAT FLANGES

BREAK ALL CORNERS AND SHARP EDGES

REVISIONS		APPROVALS			
SYM	DESCRIPTION	DATE	ENGR	PROD	Q.A.

**PROPRIETARY INFORMATION**  
 THIS DOCUMENT CONTAINS PROPRIETARY INFORMATION WHICH SHALL NOT BE REPRODUCED, TRANSFERRED TO OTHER DOCUMENTS, DISCLOSED TO OTHERS, USED FOR MANUFACTURING OR ANY OTHER PURPOSE WITHOUT PRIOR WRITTEN PERMISSION FROM AST.

UNLESS OTHERWISE SPECIFIED	DRAWN	CHECKER	MECH. ENGR.	ELEC. ENGR.	PROJ. ENGR.	CHIEF ENGR.
FRACTIONAL ± 1/32 DECIMAL .XXX ± .010 ANGULAR .XX ± 1/2"						
MATERIAL: NOTED SPEC:						
FINISH: NOTED SPEC:						

WR28 FLEXIBLE WAVEGUIDE
DRAWING # AST1640-13
SCALE NTS

<b>AST</b> MICROWAVE
SHEET 1 OF 1