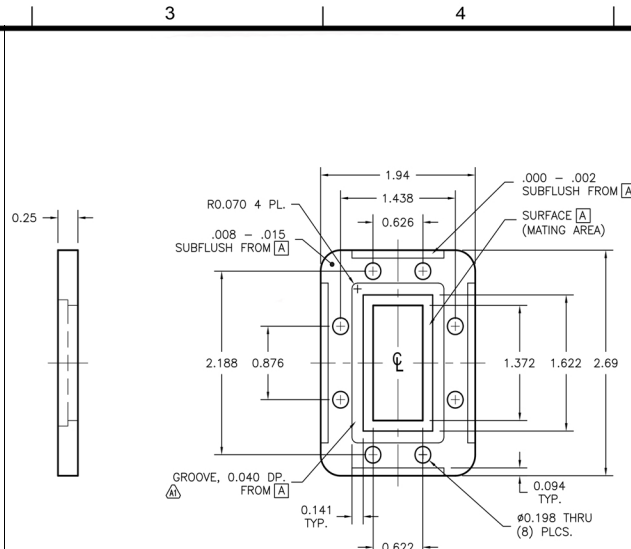
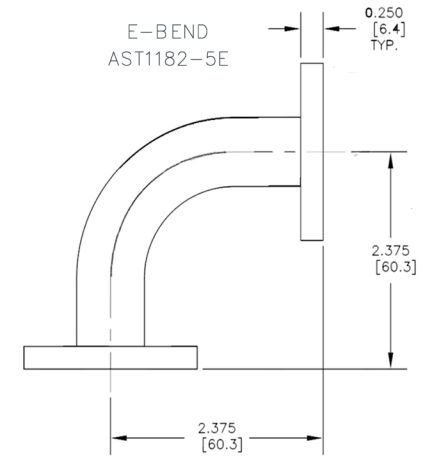


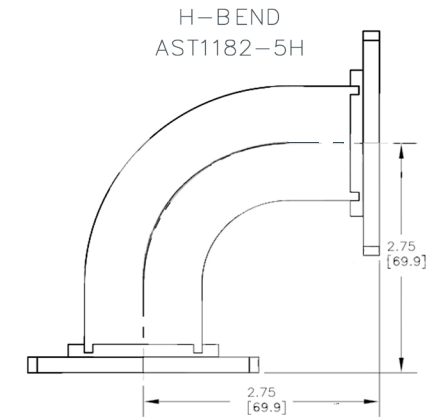
WR137 CPRF FLANGE



WR137 CPRG FLANGE



E-BEND  
AST1182-5E



H-BEND  
AST1182-5H



**SPECS**

WAVEGUIDE SIZE: WR137  
 FREQUENCY: 5.85 - 8.2 GHZ  
 VSWR: 1.08:1  
 INSERTION LOSS: 0.15 DB  
 MATERIAL: 6061 ALUMINUM  
 FINISH: BLUE ANODIZE

Type	Order Code
WR137 E-Bend	AST1182-5E-R-R (2X CPRF)
WR137 H-Bend	AST1182-5H-R-R (2X CPRF)

FLANGE CODES: CPRF=R, CPRG=G

REVISIONS		APPROVALS			
SYM	DESCRIPTION	DATE	ENGRG	PROD	Q.A.

**PROPRIETARY INFORMATION**  
 THIS DOCUMENT CONTAINS PROPRIETARY INFORMATION WHICH SHALL NOT BE REPRODUCED, TRANSFERRED TO OTHER DOCUMENTS, DISCLOSED TO OTHERS, USED FOR MANUFACTURING OR ANY OTHER PURPOSE WITHOUT PRIOR WRITTEN PERMISSION FROM AST.

BREAK ALL CORNERS AND SHARP EDGES

UNLESS OTHERWISE SPECIFIED	DRAWN	CHECKER	MECH. ENGR.	ELEC. ENGR.	PROJ. ENGR.	CHIEF ENGR.
FRACTIONAL ± 1/32						
DECIMAL .XXX ± .010						
ANGULAR .XX ± .020						
MATERIAL: NOTED						
SPEC:						
FINISH: NOTED						
SPEC:						

<b>WR137 WAVEGUIDE BEND</b>	
PN: AST1182-5-E AST1182-5-H	
DRAWING # AST1182-5	
SCALE NTS	SHEET 1 OF 1

