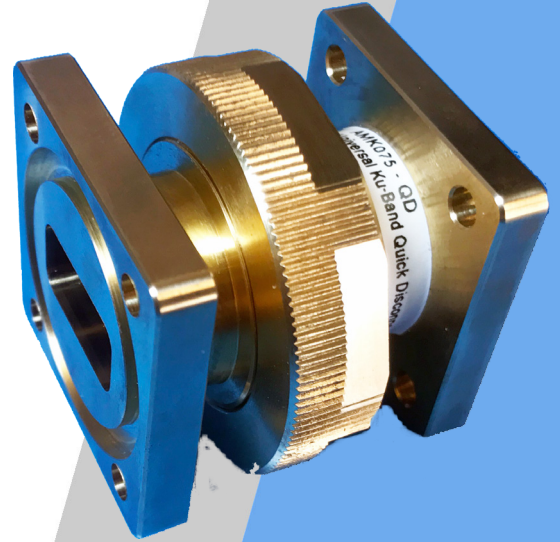




## Features:

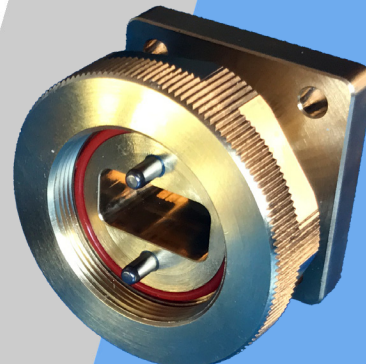
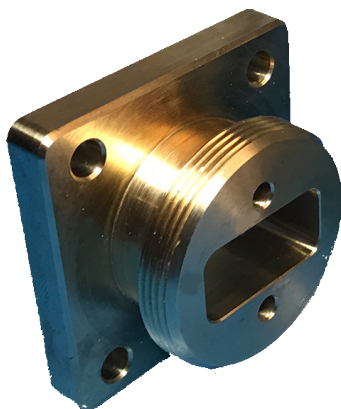
- ◆ Robust Marine Grade Brass Core Construction
- ◆ Durable & High Strength
- ◆ Dual Silicone Gasket Seal
- ◆ Extremely Low Insertion and Return Loss
- ◆ Covers 10 -15GHz Ku-Band Frequencies
- ◆ Gasket Kit Included
- ◆ 5 Year Warranty

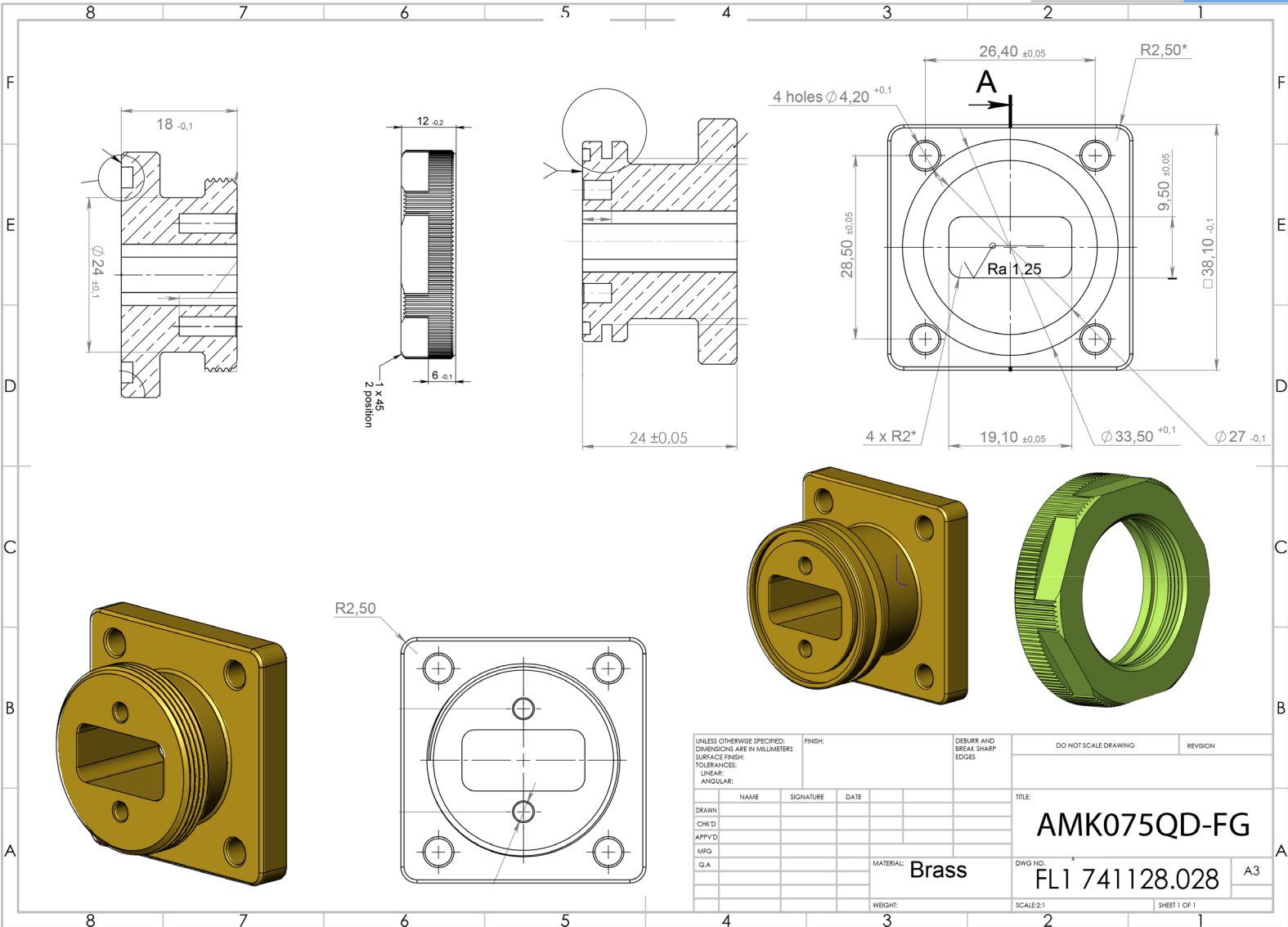


## Design Overview:



We put our in-house brilliant minded engineers to design and perfect a waveguide quick disconnect, which not only sustains its precision performance with its solid brass core flanges during the harshest environmental conditions, but can also reliably be used for many years requiring virtually no maintenance. We are the only company which can offer a 5 year warranty on our waveguide components. Thousands of these quick disconnects are used across the globe in various SATCOM applications such as Ground Station, Airborne, Marine, Mobile and Manpack type terminals.





|  |      |           |                                    |                        |          |
|--|------|-----------|------------------------------------|------------------------|----------|
| UNLESS OTHERWISE SPECIFIED:<br>DIMENSIONS ARE IN MILLIMETERS |      | FINISH:   | DEBURR AND<br>BREAK SHARP<br>EDGES | DO NOT SCALE DRAWING   | REVISION |
| TOLERANCES:  |      |           |                                    |                        |          |
| LINEAR:  |      |           |                                    |                        |          |
| ANGULAR:   |      |           |                                    |                        |          |
| DRAWN  | NAME | SIGNATURE | DATE                               | TITLE:                 |          |
| CHKD   |      |           |                                    | AMK075QD-FG            |          |
| APPVD  |      |           |                                    | DWG NO. FL1 741128.028 |          |
| MFG  |      |           |                                    | A3                     |          |
| Q.A.   |      |           |                                    | SCALE: 2:1             |          |
| MATERIAL: Brass  |      |           | WEIGHT:                            | SHEET 1 OF 1           |          |

## ORDERING GUIDE

| Model Code | Frequency Code | Waveguide Flange Type | Waveguide Type | Flange End 1 | Flange End 2 |
|------------|----------------|-----------------------|----------------|--------------|--------------|
| AM         | K              | 075                   | QD             | F            | G            |

| Flange Code | Flange Type   | Description                      |
|-------------|---------------|----------------------------------|
| F           | Flat          | Flat / Plain Square Flange WR75F |
| G           | O-Ring Groove | Grooved Square Flange WR75G      |
| QD          | Screw On      | Quick Disconnect                 |

© 2015 Amkom Design Group Inc.. All rights reserved. All Amkom Design Group Inc. logos and trademarks are the property of their respective owners. Specifications are subject to change without notice. Although every effort has been made to verify the accuracy of the information contained in this document, Amkom Design Group Inc., its officers, employees, and agents disclaim all liability (except for any liability which by law cannot be excluded), for any error, inaccuracy in, or omission from the information contained in this document or any loss or damage suffered by any person directly or indirectly through relying on this information.