

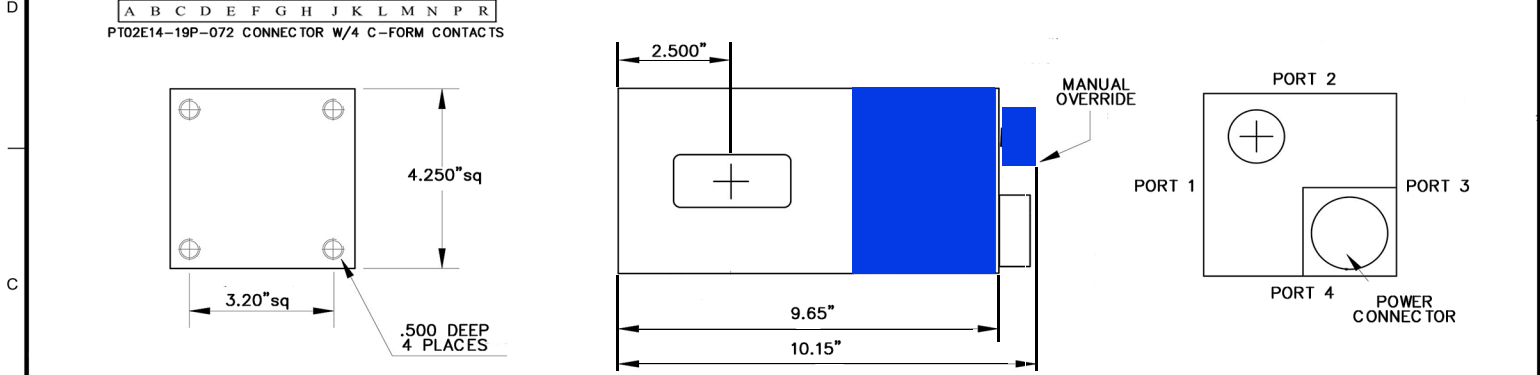
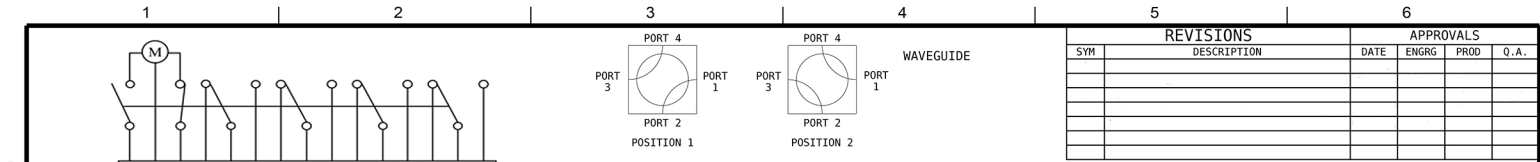
REVISIONS		APPROVALS			
SYM	DESCRIPTION	DATE	ENGRG	PROD	Q.A.

**PROPRIETARY INFORMATION**  
 THIS DOCUMENT CONTAINS PROPRIETARY INFORMATION WHICH SHALL NOT BE REPRODUCED, TRANSFERRED TO OTHER DOCUMENTS, DISCLOSED TO OTHERS, USED FOR MANUFACTURING OR ANY OTHER PURPOSE WITHOUT PRIOR WRITTEN PERMISSION FROM AST.

BREAK ALL CORNERS AND SHARP EDGES

UNLESS OTHERWISE SPECIFIED	DRAWN	MC	05/27/2017
FRACTIONAL ± 1/32 DECIMAL .XXX ± .010 .XX ± .020 ANGULAR ± 1/2°	CHECKER		
DO NOT SCALE	MECH. ENGR.		
MATERIAL: NOTED SPEC:	ELEC. ENGR.		
FINISH: NOTED SPEC:	PROJ. ENGR.		
	CHIEF ENGR.		

WR284 FLANGES	SCALE
---------------	-------



**1.0 ELECTRICAL**

- 1.1 OPERATING FREQUENCY: 2.60 - 3.95 GHZ
- 1.2 RETURN LOSS: -32DB MIN
- 1.3 ISOLATION: 70DB MIN
- 1.4 INSERTION LOSS: .05DB MAX
- 1.5 POWER HANDLING: 5KW CW
- 1.6 DRIVING VOLTAGE: OPTIONAL
- 1.7 C-FORM CONTACTS: OPTIONAL
- 1.8 INHIBIT CONTACTS: OPTIONAL (OPEN BEFORE VSWR EXCEEDS 1.3:1)
- 1.9 SWITCHING TIME: 180 MSEC MAX
- 1.10 POWER CONNECTOR: OPTIONAL

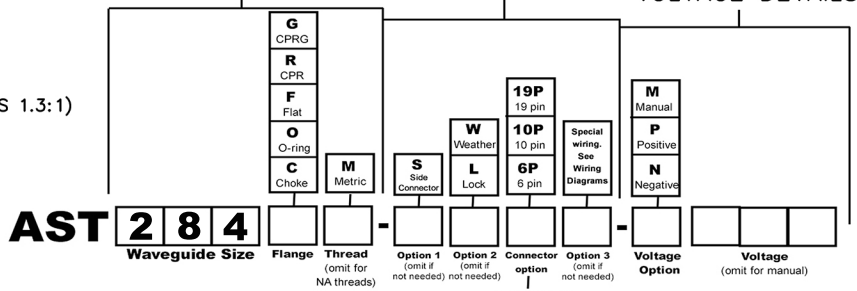
**2.0 MECHANICAL**

- 2.1 WAVEGUIDE SIZE: WR284
- 2.2 FLANGE: OPTIONAL
- 2.3 PRESSURE: 20 PSI (INCLUDING DRIVER)
- 2.4 MATERIAL: 80% ALUMINUM
- 2.5 FINISH: LUSTERON ON WAVEGUIDE, ANODIZE ON DRIVER
- 2.6 WEIGHT: 3.0 KG

**3.0 ENVIRONMENTAL**

- 3.1 OPERATING TEMP: -40° TO +75° C
- 3.2 NON OPERATING TEMP: -50° TO +100° C
- 3.3 HUMIDITY: 100%
- 3.4 SHOCK & VIBRATION: STD SHIPPING

**WAVEGUIDE DETAILS DRIVER DETAILS VOLTAGE DETAILS**



BREAK ALL CORNERS AND SHARP EDGES

UNLESS OTHERWISE SPECIFIED	DRAM	MC	05/21/2017
FRACTIONAL ± 1/32	CHECKER		
DECIMAL .XXX ± .010			
ANGULAR .XX ± 1/2°			
	MECH. ENGR.		
	ELEC. ENGR.		
	PROJ. ENGR.		
	CHEF ENGR.		

**PROPRIETARY INFORMATION**  
THIS DOCUMENT CONTAINS PROPRIETARY INFORMATION WHICH SHALL NOT BE REPRODUCED, TRANSFERRED TO OTHER DOCUMENTS, DISCLOSED TO OTHERS, USED FOR MANUFACTURING OR ANY OTHER PURPOSE WITHOUT PRIOR WRITTEN PERMISSION FROM **AST**.

**WAVEGUIDE SWITCH**  
WR 284

