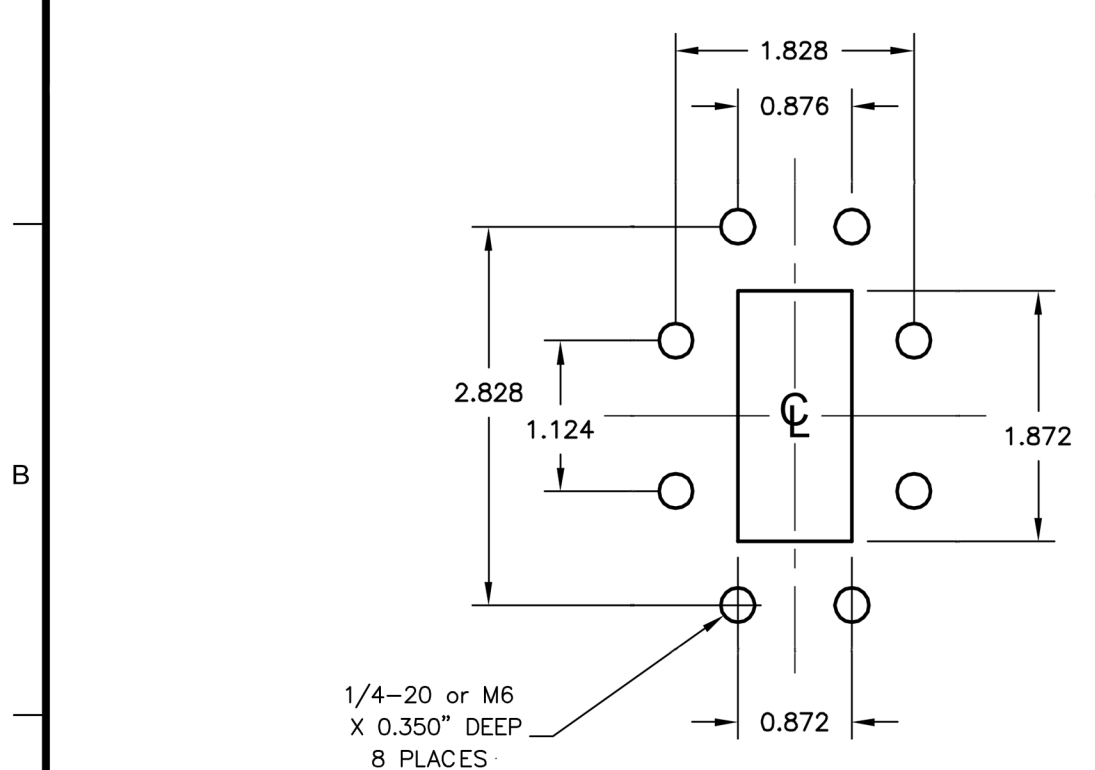


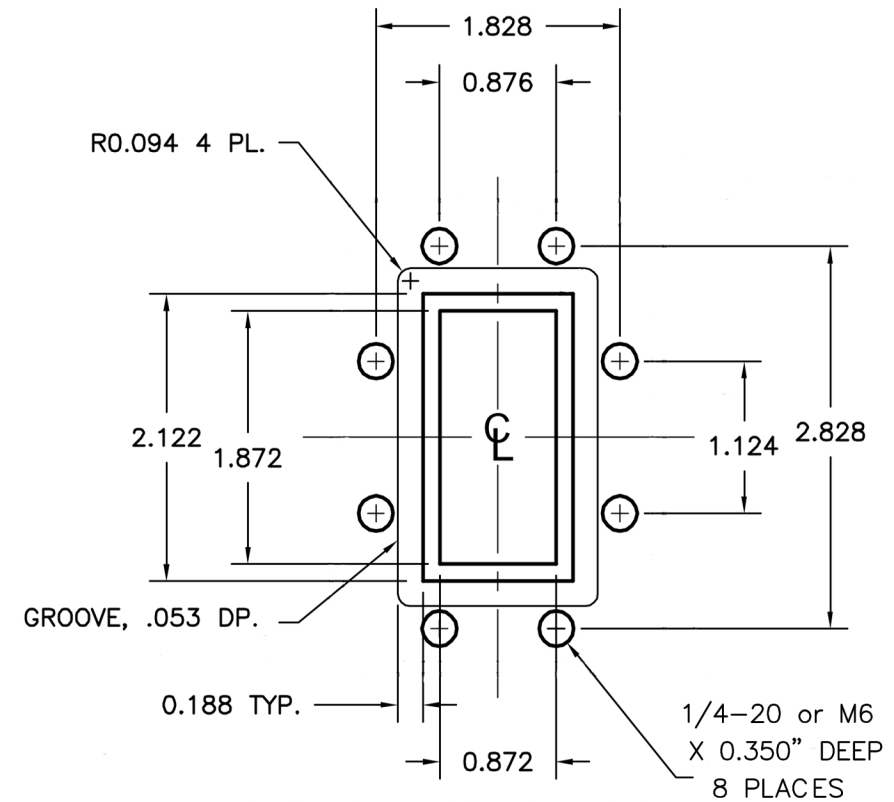
WR187 COVER FLANGE (UGF or UBR)
ORDER CODE: AST187F or AST187FM (METRIC)

WR187 GROOVED FLANGE (UGG or PBR)
ORDER CODE: AST1870 or AST1870M (METRIC)

WR187 CHOKE FLANGE
ORDER CODE: AST187C or AST187CM (METRIC)



WR187 CPRF FLANGE
ORDER CODE: AST187R or AST187RM (METRIC)



WR187 CPRG FLANGE
ORDER CODE: AST187G or AST187GM (METRIC)



REVISIONS		APPROVALS			
SYM	DESCRIPTION	DATE	ENGRG	PROD	Q.A.

PROPRIETARY INFORMATION
THIS DOCUMENT CONTAINS PROPRIETARY INFORMATION WHICH SHALL NOT BE REPRODUCED, TRANSFERRED TO OTHER DOCUMENTS, DISCLOSED TO OTHERS, USED FOR MANUFACTURING OR ANY OTHER PURPOSE WITHOUT PRIOR WRITTEN PERMISSION FROM AST.

BREAK ALL CORNERS AND SHARP EDGES

UNLESS OTHERWISE SPECIFIED	DRAWN	MC	05/27/2017
FRACTIONAL ± 1/32	CHECKER		
DECIMAL .XXX ± .010	MECH. ENGR.		
.XX ± .020	ELEC. ENGR.		
ANGULAR ± 1/2°	PROJ. ENGR.		
	CHIEF ENGR.		

WR187 FLANGES	
SCALE	



