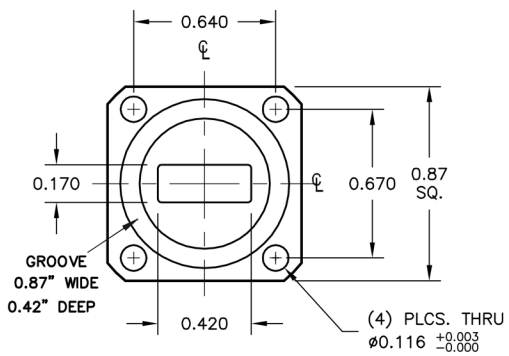
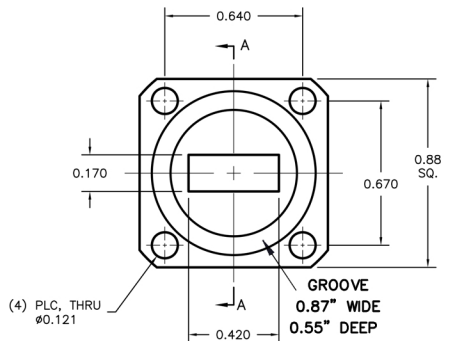


COVER FLANGE  
(UGF or UBR)



GROOVED FLANGE (UGG)



GROOVED FLANGE (PBR)

**MECHANICAL SPECS:**  
 BENDING RATING (Rad (in)):  
 STATIC-E-PLANE: 0.8 H-PLANE: 1.15  
 REPEATED-E-PLANE: 3.2 H-PLANE: 4.6  
 TWISTING RATING (±deg/ft):  
 STATIC: TOLERANCE-160  
 TWIST: 44  
 MAX OPERATING PRESSURE: 45 PSIG  
 \*AVAILABLE LENGTHS: 4", 6", 8", 12", 18", 24", 36"  
 AVAILABLE JACKETS: NEOPRENE (N)  
 FLANGE THICKNESS: 0.190"

**ELECTRICAL SPECS:**  
 OPERATING FREQUENCY: 18.0 - 26.5 GHZ  
 MAXIMUM IL ATTENUATION db/ft: 0.38  
 MAXIMUM VSWR: <36" COVER FLANGE - 1.18  
 PLAIN/CHOKE FLANGES: 1.30  
 POWER RATING CW (kW): 0.3

ORDERING INFORMATION				
MODEL #	W/G SIZE	LENGTH (in or MMS)	FLANGE 1	FLANGE 2
AST1640	11	OPTIONAL	O=O-RING F=FLAT	O=O-RING F=FLAT

SAMPLE: AST1640-11-18-0-F  
 18" WR42 FLEX W/ ORING & FLAT FLANGES

REVISIONS		APPROVALS			
SYM	DESCRIPTION	DATE	ENGR	PROD	Q.A.

**PROPRIETARY INFORMATION**  
 THIS DOCUMENT CONTAINS PROPRIETARY INFORMATION WHICH SHALL NOT BE REPRODUCED, TRANSFERRED TO OTHER DOCUMENTS, DISCLOSED TO OTHERS, USED FOR MANUFACTURING OR ANY OTHER PURPOSE WITHOUT PRIOR WRITTEN PERMISSION FROM AST.

BREAK ALL CORNERS AND SHARP EDGES

UNLESS OTHERWISE SPECIFIED FRACTIONAL ± 1/32 DECIMAL .XXX ± .010 .XX ± .020 ANGULAR ± 1/2° MATERIAL: NOTED SPEC: FINISH: NOTED SPEC:	DRAWN		
	CHECKER		
	MECH. ENGR.		
	ELEC. ENGR.		
	CHIEF ENGR.		

WR42  
 FLEXIBLE WAVEGUIDE  
 DRAWING # AST1640-11  
 SCALE NTS

**AST MICROWAVE**  
 754 Fortune Crescent  
 Kingston, ON  
 K7P 2T3, Canada  
 613-384-3939

SHEET 1 OF 1