

HRC-3 SNMP & Control Card

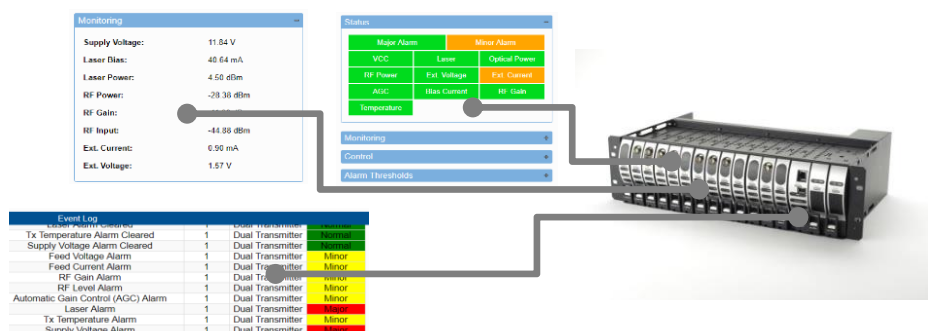
- HTML GUI Interface
- SNMP v1 and v2C compatible
- Built-in 3 port Ethernet switch
- DWDM and CWDM
- Hot swappable card
- Software and inventory management
- Auto card configuration



The **ViaLiteHD** HRC-3 rack card can be installed into the standard **ViaLiteHD** 19" rack shelf to monitor, log and raise alarms when events occur. The HRC-3 card utilizes SNMP protocol to communicate over Ethernet with the Horizons software package. If required, direct management of the HRC-3 is possible via a web browser, serial or CLI connections. The HRC-3 card gives control of RF over fiber and all other card types installed in the same 19" rack chassis, as well as allowing LAN connectivity to additional HRC-3 cards and other Ethernet devices.

- Real-time monitoring and control of all **ViaLiteHD** modules and power supplies
- Multiple port options, up to 2x fiber and 1x Ethernet, 1x fiber and 2x Ethernet or 3x RJ45 Ethernet
- Easy integration with 3rd party Network Management Systems (NMS)
- All alarm information immediately accessible via any web browser or NMS
- Displays operational status, voltage, temperature and link status of installed cards
- Remote software update and inventory management

The built-in graphical user interface can be accessed from any standard web browser using the IP address of the HRC-3 card. Alternatively, the Horizons application can be used to monitor the same information.



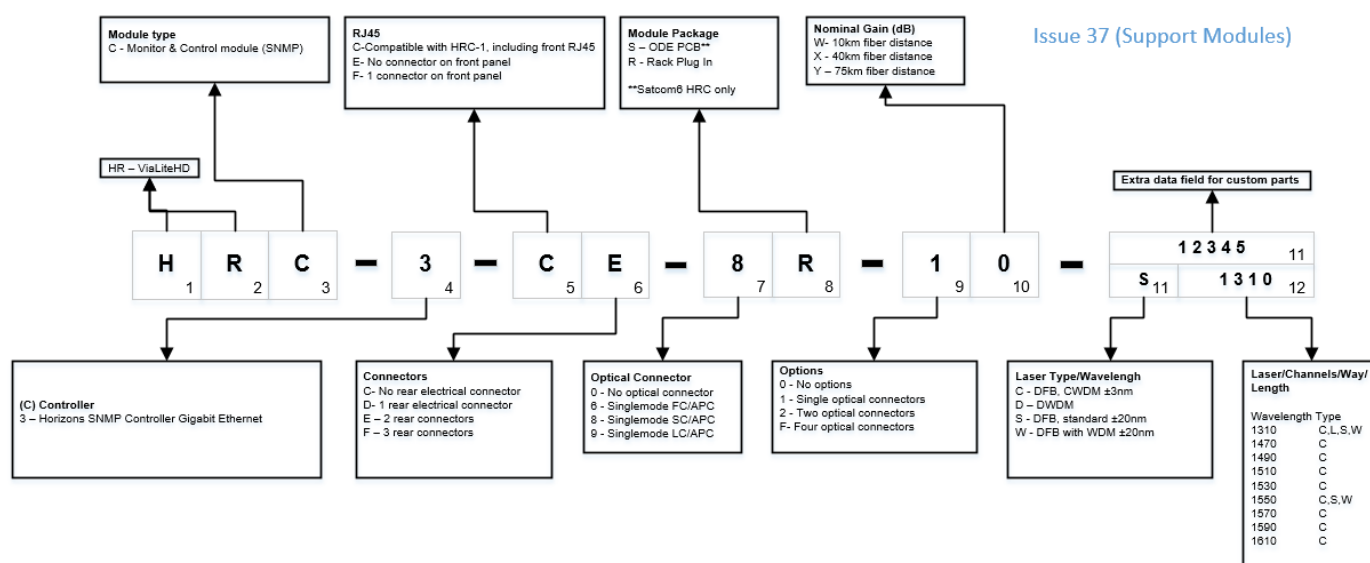
Advantages

- Monitoring and Control of any **ViaLite** RF or support products
- Can be used in installation and test as well as operation
- User-definable Minor & Major alarm threshold
- User-definable RF & Optical alarm levels
- Maintenance mode for each module

Related Products

- C-Band rack card
- L-Band rack card
- RF Switch card
- Splitter Rack card
- PSU cards

Product configurator



Technical specifications

	HRC-3 Controller card with Ethernet switch
Format	Plug-in module compatible with ViaLiteHD chassis, 7HP slot
Indicators	Front Panel LED "Power (RED / GREEN)" Front Panel LED "Rear RJ45 LINK (GREEN)" Front Panel LED "Rear Fibre LINK (GREEN)" RJ45 LED each with ACTIVITY (AMBER) and LINK (GREEN)
Electrical signal/power connector	Plug-in module, user accessible via 19" Chassis backplane
Module operating voltage	+12 V ± 0.5 V
Module operating power	4W Typical
Operating temperature	-10 °C to +50 °C
Storage temperature	-40 °C to +70 °C
Ambient relative humidity	10% to 95% (Non Condensing)
Maximum weight	300 g
RJ45 port	Up to 3 x 10/100/1000 MB/s (auto negotiating)
Network standards	10/100/1000 BASE-TX
Fiber port (SFP) Optional	Up to 2 x 1000 MB/s 1310 nm, 1550 nm, CWDM or DWDM
Fiber SFP Optional	Single-mode 9/125, Corning SMF28 or equivalent
Optical connector	LC/PC or FC/APC or E2000/APC or SC/APC or LC/APC
Optical power	-11 dBm typical, Class 1 (10 km) up to +3 dBm (75 km)
Serial Connector type	Micro-USB
Interface cable	Standard micro-USB cable
Serial data type	USB to RS232 Converter, 9600 bps, 8 data bits, 1 stop bit, no parity, no flow control
SNMP agent	Supports SNMP version 1 and version 2C
MIB	ViaLite proprietary MIB, RFC1213 compliant, supports MIB-II "system" group
Horizons SNMP Desktop App	Horizons SNMP application for Windows
HTTP Web Interface	Standard HTTP