

# Indoor Rack Mount GaN Solid State Power Amplifiers 5RU Rack Height



**650W X-Band 5RU SSPA Chassis (requires 1RU power supply)**

**Teledyne Paradise Datacom** has a rich history in the design and production of Gallium Nitride (GaN) based SSPAs. Our engineers utilize innovative linearization techniques that enable GaN amplifiers to produce linear output power with the same efficiency as tube based amplifier systems. A complete family of Satcom amplifiers has been developed that cover S-Band through Ku-Band.

GaN amplifiers have a superior set of mutually beneficial characteristics, including:

- Higher Output Power
- Greater Power-Added Efficiency
- High Reliability

These GaN amplifier modules are installed in a 5RU (8.75 inch high) Chassis, which features a front panel touchscreen display and five fault condition indicators that reflect some of the SSPA major fault states. Local/Remote and Mute/Unmute indicators show the current control mode and mute state of the amplifier.

A full compliment of remote monitor and control of the amplifier is available at the rear panel, including: RS-232/RS-485; Ethernet, with UDP and SNMP control; Web Browser TCP/IP; and Discrete hardware (parallel port) signals.

## FEATURES

- Extremely High Power Density:
  - to 2.0 kW L-Band
  - to 2.0 kW S-Band
  - to 1.6 kW X-Band
  - to 1.6 kW C-Band
  - to 1.0 kW Ku-Band
- Removable Fan Tray and M&C Card Assembly
- Remote Communication via RS232/485 or Ethernet
- RF Output Sample Port
- 20 dB RF Gain Adjustment
- 1RU N+1 Power Supply
- Color Touchscreen Display
- True RF Output Power Measurement
- Built-in Maintenance Switch Controller

## OPTIONS

- Remote Control Panel
- L-Band Input operation
- Reflected Power Monitor
- Input Sample Port
- Exhaust Duct Adapters
- Redundant Systems
- Phase Combined Systems

# Indoor Rack Mount GaN Solid State Power Amplifiers 5RU Rack Height

## Specifications, L-Band SSPAs

PARAMETER	NOTES	LIMITS	UNITS
Frequency Range	Frequency selection "A"	1.750 to 1.850	GHz
Output Power Typical, $P_{sat}$ Guaranteed minimum, $P_{Linear}$ <sup>1</sup>	HPAL5500ARXXXXPG HPAL5600ARXXXXPG HPAL5800ARXXXXPG HPAL510KARXXXXPG HPAL512KARXXXXPG HPAL516KARXXXXPG HPAL520KARXXXXPG	$P_{sat} / P_{Linear}$ 57.0 (500) / 54.0 (250) 57.8 (600) / 54.8 (300) 59.0 (800) / 56.0 (400) 60.0 (1000) / 57.0 (500) 60.8 (1200) / 57.8 (600) 62.0 (1600) / 59.0 (800) 63.0 (2000) / 60.0 (1000)	dBm (W) dBm (W) dBm (W) dBm (W) dBm (W) dBm (W) dBm (W)
Power Requirements Line Frequency Line Power (Voltage) (typical @ 220 VAC)	power factor  HPAL5500ARXXXXPG HPAL5600ARXXXXPG HPAL5800ARXXXXPG HPAL510KARXXXXPG HPAL512KARXXXXPG HPAL516KARXXXXPG HPAL520KARXXXXPG	.98 47 to 63 @ $P_{sat} / P_{Linear}$ 2100 / 1500 (180 to 265) <sup>2</sup> 2200 / 1700 (180 to 265) <sup>2</sup> 2500 / 2000 (180 to 265) <sup>2</sup> 4000 / 3500 (180 to 265) 4500 / 3700 (180 to 265) 5100 / 4100 (180 to 265) 7800 / 6500 (180 to 265)	Hz  W (VAC) W (VAC) W (VAC) W (VAC) W (VAC) W (VAC) W (VAC)
Receive Band Noise Power Density	without optional filter with optional filter	-95 -155	dBW / 4 KHz dBW / 4 KHz

## Specifications, S-Band SSPAs

PARAMETER	NOTES	LIMITS	UNITS
Frequency Range	Frequency selection "G" Frequency selection "A" Frequency selection "B"	1.750 to 2.120 <sup>3</sup> 2.020 to 2.120 2.200 to 2.300	GHz GHz GHz
Output Power Typical, $P_{sat}$ Guaranteed minimum, $P_{Linear}$ <sup>1</sup>	HPAS5500ARXXXXPG HPAS5600ARXXXXPG HPAS5800ARXXXXPG HPAS510KARXXXXPG HPAS512KARXXXXPG HPAS516KARXXXXPG HPAS520KARXXXXPG	$P_{sat} / P_{Linear}$ 57.0 (500) / 54.0 (250) 57.8 (600) / 54.8 (300) 59.0 (800) / 56.0 (400) 60.0 (1000) / 57.0 (500) 60.8 (1200) / 57.8 (600) 62.0 (1600) / 59.0 (800) 63.0 (2000) / 60.0 (1000)	dBm (W) dBm (W) dBm (W) dBm (W) dBm (W) dBm (W) dBm (W)
Power Requirements Line Frequency Line Power (Voltage) (typical @ 220 VAC)	power factor  HPAS5500ARXXXXPG HPAS5600ARXXXXPG HPAS5800ARXXXXPG HPAS510KARXXXXPG HPAS512KARXXXXPG HPAS516KARXXXXPG HPAS520KARXXXXPG	.98 47 to 63 @ $P_{sat} / P_{Linear}$ 2100 / 1500 (180 to 265) <sup>2</sup> 2200 / 1700 (180 to 265) <sup>2</sup> 2500 / 2000 (180 to 265) <sup>2</sup> 4000 / 3500 (180 to 265) 4500 / 3700 (180 to 265) 5100 / 4100 (180 to 265) 7800 / 6500 (180 to 265)	Hz  W (VAC) W (VAC) W (VAC) W (VAC) W (VAC) W (VAC) W (VAC)
Receive Band Noise Power Density	without optional filter with optional filter	-95 -155	dBW / 4 KHz dBW / 4 KHz

**Note 1:**  $P_{Linear}$  = maximum output power at which third order intermodulation products < -25 dBc (for two tones separated by 5 MHz) or spectral regrowth on a single QPSK at 1.5 x symbol rate or OQPSK at 1.0 x symbol rate is < -30 dBc.

**Note 2:** For 90 to 180 VAC operation, consult factory.

**Note 3:** Not available at 500W, 1000W (10K) or 2000W (20K).

# Indoor Rack Mount GaN Solid State Power Amplifiers 5RU Rack Height

## Specifications, C-Band SSPAs

PARAMETER	NOTES	LIMITS	UNITS
Frequency Range	Frequency selection "L" Frequency selection "H" Frequency selection "C" <sup>2</sup> Frequency selection "A" Frequency selection "B" <sup>2</sup> Frequency selection "E" Frequency selection "F"	4.400 to 5.000 5.715 to 5.790 5.750 to 6.670 5.850 to 6.425 5.850 to 6.725 6.425 to 6.725 6.725 to 7.025	GHz GHz GHz GHz GHz GHz GHz
Output Power Typical, P <sub>sat</sub> Guaranteed minimum, P <sub>Linear</sub> <sup>1</sup>	HPAC5300ARXXXXPG HPAC5400ARXXXXPG HPAC5650ARXXXXPG HPAC5800ARXXXXPG HPAC513KARXXXXPG HPAC516KARXXXXPG	P <sub>sat</sub> / P <sub>Linear</sub> 54.8 (300) / 51.8 (150) 56.0 (400) / 53.0 (200) 58.1 (650) / 55.1 (325) 59.0 (800) / 56.0 (400) 61.1 (1300) / 58.1 (650) 62.0 (1600) / 59.0 (800)	dBm (W) dBm (W) dBm (W) dBm (W) dBm (W) dBm (W)
Power Requirements Line Frequency Line Power (Voltage) (typical @ 220 VAC)	power factor  HPAC5300ARXXXXPG HPAC5400ARXXXXPG HPAC5650ARXXXXPG HPAC5800ARXXXXPG HPAC513KARXXXXPG HPAC516KARXXXXPG	.98 47 to 63 @ P <sub>sat</sub> / P <sub>Linear</sub> 1500 / 1300 (180 to 265) <sup>3</sup> 1800 / 1600 (180 to 265) <sup>3</sup> 3300 / 2800 (180 to 265) <sup>3</sup> 4000 / 3500 (180 to 265) 4200 / 3800 (180 to 265) 7800 / 7000 (180 to 265)	Hz  W (VAC) W (VAC) W (VAC) W (VAC) W (VAC) W (VAC)
Receive Band Noise Power Density	without filter	-155	dBW / 4 KHz

## Specifications, X-Band SSPAs

PARAMETER	NOTES	LIMITS	UNITS
Frequency Range	Frequency selection "F" Frequency selection "D" Frequency selection "A"	7.10 to 7.40 7.70 to 8.40 7.90 to 8.40	GHz GHz GHz
Output Power Typical, P <sub>sat</sub> Guaranteed minimum, P <sub>Linear</sub> <sup>1</sup>	HPAX5300ARXXXXPG HPAX5400ARXXXXPG HPAX5650ARXXXXPG HPAX5800ARXXXXPG HPAX513KARXXXXPG HPAX516KARXXXXPG	P <sub>sat</sub> / P <sub>Linear</sub> 54.8 (300) / 51.8 (150) 56.0 (400) / 53.0 (200) 58.1 (650) / 55.1 (325) 59.0 (800) / 56.0 (400) 61.1 (1300) / 58.1 (650) 62.0 (1600) / 59.0 (800)	dBm (W) dBm (W) dBm (W) dBm (W) dBm (W) dBm (W)
Power Requirements Line Frequency Line Power (Voltage) (typical @ 220 VAC)	power factor  HPAX5300ARXXXXPG HPAX5400ARXXXXPG HPAX5650ARXXXXPG HPAX5800ARXXXXPG HPAX513KARXXXXPG HPAX516KARXXXXPG	.98 47 to 63 @ P <sub>sat</sub> / P <sub>Linear</sub> 1500 / 1300 (180 to 265) <sup>3</sup> 2000 / 1700 (180 to 265) <sup>3</sup> 3300 / 2800 (180 to 265) <sup>3</sup> 4000 / 3500 (180 to 265) 7000 / 6000 (180 to 265) 8000 / 7000 (180 to 265)	Hz  W (VAC) W (VAC) W (VAC) W (VAC) W (VAC) W (VAC)
Receive Band Noise Power Density	without optional filter with optional filter	-85 -155	dBW / 4 kHz dBW / 4 kHz

**Note 1:** P<sub>Linear</sub> = maximum output power at which third order intermodulation products < -25 dBc (for two tones separated by 5 MHz) or spectral regrowth on a single QPSK at 1.5 x symbol rate or OQPSK at 1.0 x symbol rate is < -30 dBc.

**Note 2:** Output power decreases over the extended portion of the frequency range. Both P<sub>sat</sub> and P<sub>Linear</sub> de-rate by 1 dB from 5.85 to 5.75 GHz and from 6.425 to 6.725 GHz.

**Note 3:** For 90 to 180 VAC operation, consult factory.

# Indoor Rack Mount GaN Solid State Power Amplifiers 5RU Rack Height

## Specifications, Ku-Band SSPAs

PARAMETER	NOTES	LIMITS	UNITS
Frequency Range	Frequency selection "F" Frequency selection "B" Frequency selection "A" Frequency selection "G"	12.75 to 13.25 13.75 to 14.50 14.00 to 14.50 14.75 to 15.25	GHz GHz GHz GHz
Output Power Typical, $P_{sat}$ Guaranteed minimum, $P_{Linear}$ <sup>1</sup>	HPAK5300ARXXXXPG HPAK5400ARXXXXPG HPAK5500ARXXXXPG HPAK5600ARXXXXPG HPAK5800ARXXXXPG HPAK510KARXXXXPG	$P_{sat} / P_{Linear}$ 54.8 (300) / 51.8 (150) 56.0 (400) / 53.0 (200) 57.0 (500) / 54.0 (250) 57.8 (600) / 54.8 (300) 59.0 (800) / 56.0 (400) 60.0 (1000) / 57.0 (500)	dBm (W) dBm (W) dBm (W) dBm (W) dBm (W) dBm (W)
Power Requirements Line Frequency Line Power (Voltage) (typical @ 220 VAC)	power factor  HPAK5300ARXXXXPG HPAK5400ARXXXXPG HPAK5500ARXXXXPG HPAK5600ARXXXXPG HPAK5800ARXXXXPG HPAK510KARXXXXPG	.98 47 to 63  @ $P_{sat} / P_{Linear}$ 2000 / 1500 (180 to 265) <sup>3</sup> 2500 / 1700 (180 to 265) <sup>3</sup> 3000 / 2000 (180 to 265) <sup>3</sup> 4000 / 3000 (180 to 265) 5000 / 3400 (180 to 265) 6000 / 4000 (180 to 265)	Hz  W (VAC) W (VAC) W (VAC) W (VAC) W (VAC) W (VAC)
Receive Band Noise Power Density <sup>2</sup>		-155	dBW / 4 kHz

**Note 1:**  $P_{Linear}$  = maximum output power at which third order intermodulation products < -25 dBc (for two tones separated by 5 MHz) or spectral regrowth on a single QPSK at 1.5 x symbol rate or OQPSK at 1.0 x symbol rate is < -30 dBc.

**Note 2:** All Ku-Band SSPAs are fitted with a receive band reject bulkhead filter, standard. An optional pressure window is available.

**Note 3:** For 90 to 180 VAC operation, consult factory.

# Indoor Rack Mount GaN Solid State Power Amplifiers 5RU Rack Height

## Common Electrical Specifications

PARAMETER	NOTES	LIMITS	UNITS
Gain	range	55-75	dB
Gain Flatness	full band	± 1.0	dB
	full band (Extended C-Band)	± 1.5	dB
	full band (L-, S-Band)	± 0.75	dB
Gain Slope	per 40 MHz	± 0.3	dB/40 MHz
	per 10 MHz (L-, S-Band)	± 0.3	dB/10 MHz
Gain Variation vs. Temperature	0 °C to +50 °C	± 1.0	dB
Gain Stability	at constant temperature	± 0.25	dB/24 hours
Gain Adjustment	0.1 dB resolution	20	dB
Intermodulation Distortion (Two-tone, 5 MHz spacing)	At P <sub>Linear</sub> (P <sub>sat</sub> - 3 dB)	-25	dBc
AM/PM Conversion	@ rated P <sub>Linear</sub>	≤ 1.0	°/dB
Spurious	@ rated P <sub>Linear</sub>	-65	dBc
Harmonics (SSPA only)	@ rated P <sub>Linear</sub>	-50	dBc
	@ rated P <sub>Linear</sub> (L-, S-Band)	-30	dBc
Input/Output VSWR	Extended C-Band Output VSWR: Ku-Band with bulkhead filter	1.30:1 1.50:1 1.40:1	
Noise Figure	at maximum gain	10	dB
	at maximum gain (L-, S-Band)	8	dB
Group Delay (per 40 MHz segment)	Linear	0.01	ns/MHz
	Parabolic	0.003	ns/MHz <sup>2</sup>
	Ripple	1.0	ns p-p
Transmit Band Noise Output Power Density	TX Band	-75	dBW/4 KHz
Residual AM Noise, typical	Offset frequency from carrier		
	1 Hz	-110	dBc/Hz
	10 Hz	-120	dBc/Hz
	100 Hz	-130	dBc/Hz
	1 KHz	-135	dBc/Hz
	10 KHz	-140	dBc/Hz
	100 KHz	-140	dBc/Hz
	1 MHz	-140	dBc/Hz
Residual Phase Noise, typical (SSPA only)	Offset frequency from carrier		
	10 Hz	-90	dBc/Hz
	100 Hz	-100	dBc/Hz
	1 KHz	-110	dBc/Hz
	10 KHz	-120	dBc/Hz
	100 KHz	-125	dBc/Hz
	1 MHz	-130	dBc/Hz
True RF Power Detector	Range Accuracy	P <sub>sat</sub> to (P <sub>sat</sub> - 20) ± 0.75	dB dBm

### 1RU N+1 Redundant Power Supply

The combination of a separate, fully redundant power supply is an excellent means of obtaining the ultimate in system reliability. The power supply is an N+1 redundant configuration, meaning that there is one more power supply module available than required to operate the SSPA. A failure of one power supply module will not take the amplifier off the air.



## L-Band Operation

Teledyne Paradise Datacom amplifiers are available with an integrated L-Band Block Up Converter. L-Band units utilize Teledyne Paradise Datacom's proprietary zBUC technology. The addition of a zBUC® converter to the SSPA typically increases the gain by 2-4 dB. The advantages of zBUC technology include:

- zBUC converter can detect and switch to an externally supplied reference.
- Optional internal high stability (10MHz) reference.
- zBUC converter can lock to an externally supplied reference of 10 or 50 MHz.
- zBUC converter can accept a wide range of external reference power (-10 to +5 dBm).

## Available Frequency Plans

Band	Frequency Plan	IF Input	LO Frequency	RF Output
C	Sub-Band "A"	950 - 1525 MHz	4.900 GHz	5.850 - 6.425 GHz
C	Sub-Band "B"	950 - 1825 MHz	4.900 GHz	5.850 - 6.725 GHz
C	Sub-Band "C"	950 - 1870 MHz	4.800 GHz	5.750 - 6.670 GHz
C	Sub-Band "E"	950 - 1250 MHz	5.475 GHz	6.425 - 6.725 GHz
C	Sub-Band "F"	950 - 1250 MHz	5.775 GHz	6.725 - 7.025 GHz
C	Sub-Band "L"	950 - 1550 MHz	3.450 GHz	4.400 - 5.000 GHz
X	Sub-Band "A"	950 - 1450 MHz	6.950 GHz	7.900 - 8.400 GHz
Ku	Sub-Band "A"	950 - 1450 MHz	13.050 GHz	14.00 - 14.50 GHz
Ku	Sub-Band "B"	950 - 1700 MHz	12.800 GHz	13.75 - 14.50 GHz
Ku	Sub-Band "F"	950 - 1450 MHz	11.800 GHz	12.75 - 13.25 GHz

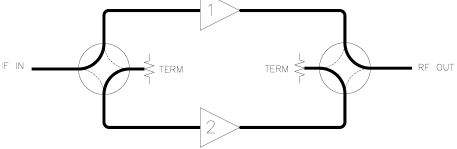
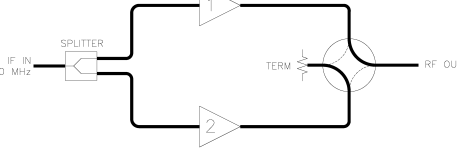
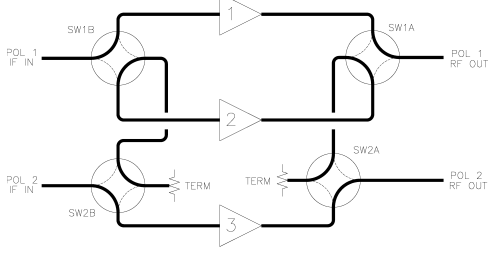
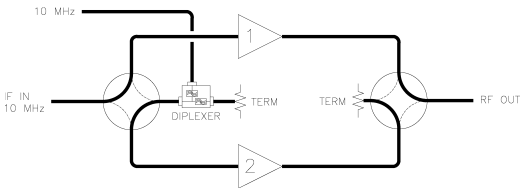
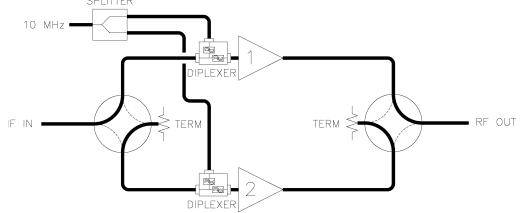
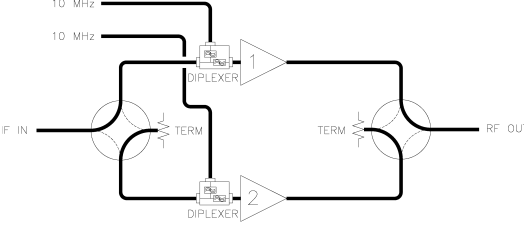
## Electrical Specifications for 5RU RM SSPA with ZBUC converter

PARAMETER	NOTES	LIMITS				UNITS
Gain	Nominal setting	75				dB
Gain Flatness	full band (C-,X-,Ku-bands)	± 2.0				dB
Gain Slope	per 40 MHz (C-,X-,Ku-bands)	± 0.5				dB/40 MHz
Gain Adjusted Range		20				dB
	Typical C-Band Adj. Range	60 - 80				dB
	Typical Ku-Band Adj. Range	57 - 77				dB
Gain Stability	-40 to +60 °C	± 1.5				dB
Phase Noise	Offset frequency from carrier	<u>Absolute max.</u>	<u>C-band (typ.)</u>	<u>X-band (typ.)</u>	<u>Ku-band (typ.)</u>	
	10 Hz	-30	-60	-58	-56	dBc/Hz
	100 Hz	-60	-74	-70	-67	dBc/Hz
	1 KHz	-70	-84	-80	-78	dBc/Hz
	10 KHz	-80	-100	-94	-91	dBc/Hz
	100 KHz	-90	-105	-97	-94	dBc/Hz
	1 MHz	-90	-125	-122	-120	dBc/Hz
Spurious	In-Band Signal Related (C-/Ku-Band) (Extended C-Band) Close to Carrier Spurious (≤ 20 MHz) Local Oscillator	-50 -40 -50 -30				dBc dBc dBc dBm
Noise Figure	At Maximum gain	20				dB
Transmit Band Noise Output Power Density	Tx Band at Maximum gain	-65				dBW/4kHz
Input VSWR	L-Band	1.5 : 1				
Internal Reference Option	Reference Accuracy (initial) Aging per day (after 30 days) Aging per year (after 30 days) Reference Stability over Temperature (-40 to +40 °C, ambient)	± 1 • 10 <sup>-8</sup> ± 1 • 10 <sup>-9</sup> ± 6 • 10 <sup>-8</sup> ± 1 • 10 <sup>-8</sup>				

# Indoor Rack Mount GaN Solid State Power Amplifiers 5RU Rack Height

## Reference Options in Redundant Systems with L-Band Input

See below for BUC configurations in which the 10 MHz reference can be distributed to units in redundant systems. Converters with internal reference oscillators automatically switch to an externally applied reference.

1:1 Redundant Systems	Ref. Option	1:2 Redundant Systems
<p><b>Internal Reference</b> Standard for BUC option 'M' with input switching</p>  <p><b>Internal/External Reference</b> Standard for BUC option 'M' or 'P' with input splitting</p> 	Option 1	<p><b>Internal Reference</b> Standard for BUC option 'M'</p> 
<p><b>External 10 MHz Diplexed to Standby Unit</b></p> 		Option 2
<p><b>Single External 10 MHz Diplexed to Each Unit</b> Standard for BUC option 'P' with input switching</p> 	Option 3	
<p><b>Separate External 10 MHz Diplexed to Each Unit</b></p> 		Option 4

# Indoor Rack Mount GaN Solid State Power Amplifiers 5RU Rack Height

## Mechanical Specifications

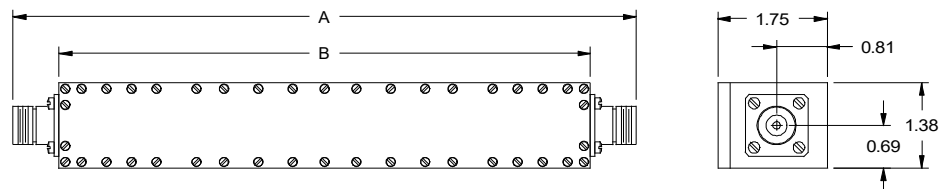
PARAMETER	NOTES	LIMITS	UNITS
Size (SSPA)	width X height X depth	19.0 x 8.75 x 30.25 483 x 222 x 768	inches mm
Size (Power Supply)	width X height X depth	19.0 x 1.75 x 15.97 483 x 45 x 406	inches mm
Weight (SSPA)	With integrated zBUC converter	150 (68) +1.7 (+0.8)	lbs. (kg) lbs. (kg)
Weight (Power Supply)	with four (4) power supply modules	29 (13.2)	lbs. (kg)
Finish		Paint	Gray; powder coat
Connectors	RF Input RF Output (S-Band) RF Output (C-Band) RF Output (X-Band) RF Output (Ku-Band) RF Output Sample	Type N WR430 WR137 Waveguide WR112 Waveguide WR75 Waveguide Type N	Female CPR430G Flange (PDR-22) CPR137G Flange (PDR-70) CPR112G Flange (PDR-84) Grooved flange (PBR-120) Female

## Environmental Specifications

PARAMETER	NOTES	LIMITS	UNITS
Operating Temperature	Ambient	0 to +50	°C
Relative Humidity	Non-condensing	95	%
Cooling System	Forced Convection Air Cooling	Front Panel - Intake Rear Panel - Exhaust	
Audible Noise	Measured 1m from unit, at P <sub>sat</sub>	61	dBA
Altitude	No temperature de-rating up to 10,000 ft. (3000 m) De-rate maximum temperature by 2 °C per 1,000 ft (300 m) beyond 10,000 ft.		

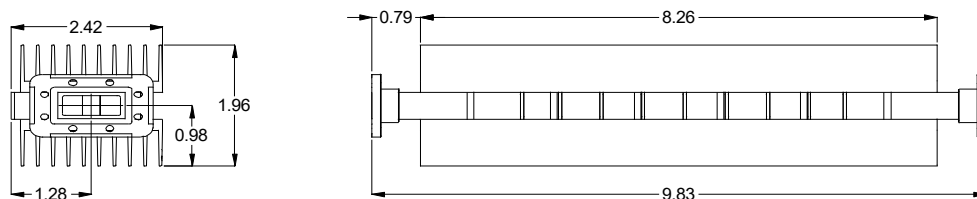
## Receive Band Filter Options

S-Band



- 2.020-2.120 GHz (Band A) : Filter L205250-S3-TX Dimensions: A=9.972 , B=8.500  
 2.200-2.300 GHz (Band B) : Filter L205250-S4-TX Dimensions: A=12.222 , B=10.750  
 1.750-2.120 GHz (Band G) : Filter L205250-S11-TX Dimensions: A=4.730 , B=3.250

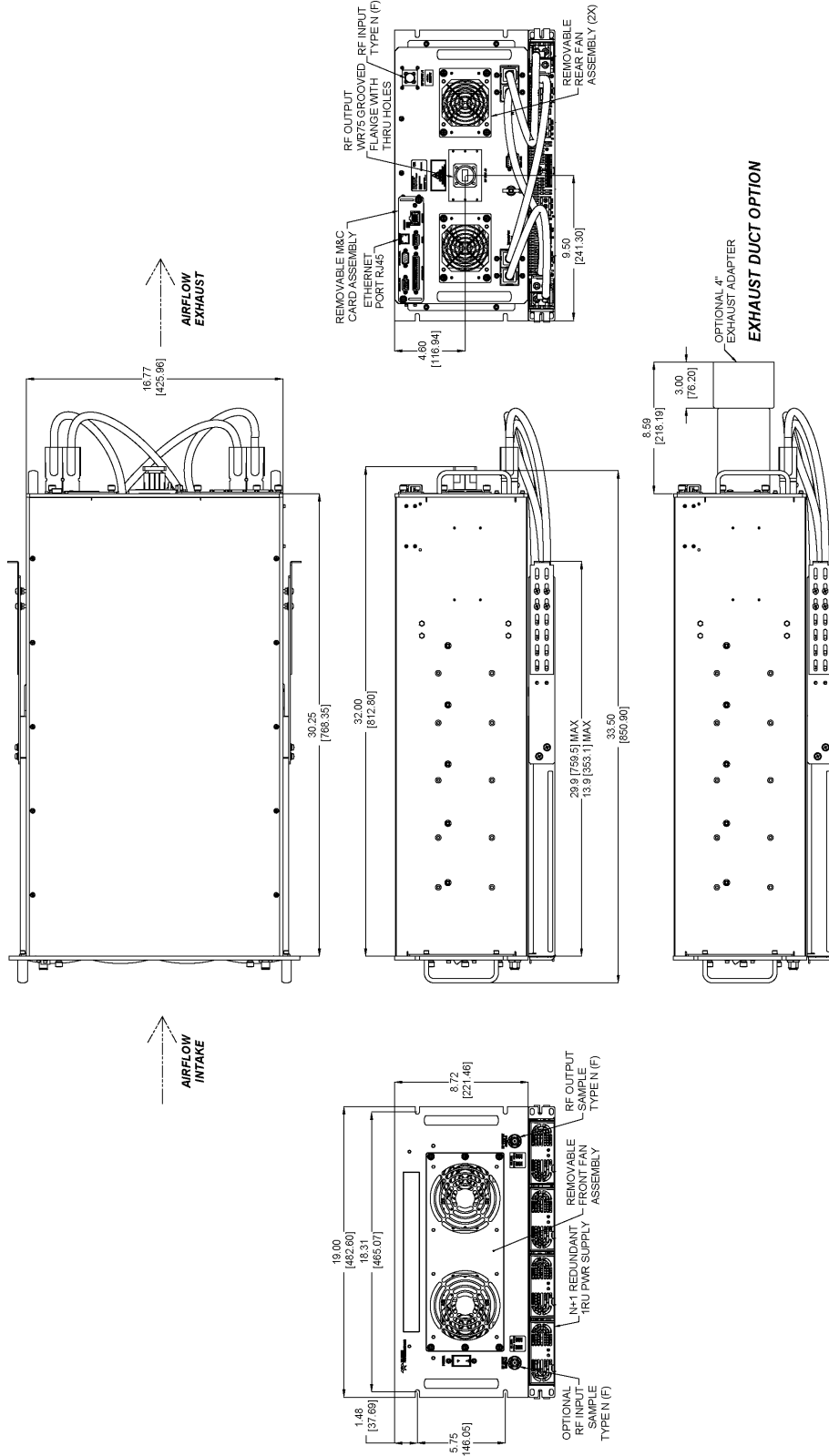
X-Band





# Indoor Rack Mount GaN Solid State Power Amplifiers 5RU Rack Height

## Outline Drawing, Typical Ku-Band SSPA Chassis





## Redundant and Phase Combined Systems

Teledyne Paradise Datacom's 5RU Rack Mount SSPAs can be configured in a variety of redundant and phase combined configurations.

- 1:1 Redundant System with Internal Redundancy Control
- 1:1 Redundant System with RCP2-1100 Redundant System Controller
- 1:1 Fixed Phase Combined System with FPRC-1100 Phase Combined System Controller
- 1:2 Redundant System with Internal Redundancy Control
- 1:2 Redundant System with RCP2-1200 Redundant System Controller
- 1:2 Fixed Phase Combined System with FPRC-1200 Phase Combined System Controller

## System Output Power Capacity

Due to residual losses inherent in redundant system configurations (waveguide bends; switch and coupler losses), reduce the typical output power specification of a single amplifier by approximately 0.2 dB for 1:1 and by 0.4 dB for 1:2 systems.

In phase combined systems, these same losses result in slightly less than the ideal addition of 3 dB to the output power of a single HPA unit. For 1:1 phase combined systems, the typical additive output power is approximately 2.70 dB above the output power of a single HPA. For 1:2 phase combined systems, the typical additive output power is approximately 2.50 dB above the output power of a single HPA.

Actual system losses will vary based on the system options.

## System Controllers

The 1RU system controller provides an extremely user friendly interface for complete monitor and control of the amplifier system.



**Redundant System Controller Configured for 1:1 Redundant Mode**

The front panel touchscreen display shows the on-line amplifiers and the switch positions. Fault indicators are provided for easy identification of system status. All system monitor and control is available locally at the front panel, as well as remotely by the RS232, RS485, or Ethernet interface ports. Audible alarms and a full complement of parallel I/O signal are available at the rear panel of the controller.

# Indoor Rack Mount GaN Solid State Power Amplifiers 5RU Rack Height

## Part Number Configuration Matrix

Power Level (Watts)	
L-Band	500, 600, 800, 1000 (10K), 1200 (12K), 1600 (16K), 2000 (20K)
S-Band	500, 600, 800, 1000 (10K), 1200 (12K), 1600 (16K), 2000 (20K)
C-Band	300, 400, 650, 800, 1300 (13K), 1600 (16K)
X-Band	300, 400, 650, 800, 1300 (13K), 1600 (16K)
Ku-Band	300, 400, 500, 600, 800, 1000 (10K)

Band	Rack Height
L-Band	L
S-Band	S
C-Band	C
X-Band	X
Ku-Band	K

Standalone Unit or System Package	
R	Standalone amplifier
S	System with Cabinet, Top Mount Waveguide Switching
T	System without Cabinet, Top Mount Waveguide Switching
Y	System with Cabinet, Rear Mount Waveguide Switching
Z	System without Cabinet, Rear Mount Waveguide Switching

Block Up Converter	
M	Internal Reference BUC
P	External Reference BUC
X	No BUC

See page 6 for BUC reference configuration options. **Option 1** is standard for all 1:1 and 1:2 systems using BUC option 'M' and for 1:1 systems with input splitting using BUC option 'P'. **Option 3** is standard for all 1:2 systems and 1:1 systems with input switching using BUC option 'P'.

GaN Device Designator	
G	GaN Device

**MODEL:** HPA C 5 8 0 0 A R M X X X P G

Frequency Sub Band			
S-Band		X-Band	
A	2.02 to 2.12 GHz	A <sup>1</sup>	7.90 to 8.40 GHz
B	2.20 to 2.30 GHz	D	7.70 to 8.40 GHz
G <sup>2</sup>	1.75 to 2.12 GHz	F	7.10 to 7.40 GHz
C-Band		Ku-Band	
A <sup>1</sup>	5.850 to 6.425 GHz	A <sup>1</sup>	14.00 to 14.50 GHz
B <sup>1</sup>	5.850 to 6.725 GHz	B <sup>1</sup>	13.75 to 14.50 GHz
C <sup>1</sup>	5.750 to 6.670 GHz	F <sup>1</sup>	12.75 to 13.25 GHz
E <sup>1</sup>	6.425 to 6.725 GHz	G	14.75 to 15.25 GHz
F <sup>1</sup>	6.725 to 7.025 GHz	L-Band	
H	5.715 to 5.790 GHz	A	1.75 to 1.85 GHz
L <sup>1</sup>	4.400 to 5.000 GHz		

<sup>1</sup> Available with optional BUC  
<sup>2</sup> Not available at 500W, 1000W (10K) or 2000W (20K).

Configuration Modifier 3	
P	Standard (N+1 Power Supply)
L	N+1 P.S. + Rear Exhaust Adapters

Configuration Modifier 2	
X	Standard
R <sup>1</sup>	Rx Band Reject Filter
V	Reflected Power Monitor
C <sup>1</sup>	R + V (see above)

<sup>1</sup> L-Band, S-Band and X-Band units only

Configuration Modifier 1	
X	Standard
S	Input Sample Port

Standalone Unit or System Configuration	
X	Standalone amplifier
A	1:1 System, Input Switching, Internal Control
B	1:1 System, Input Splitter, Internal Control
C	1:2 System, Input Switching, RCP2-1200 <sup>1</sup>
D	1:2 System, Input Switching, Internal Control
E	1:2 Phase Combined System, Input Splitter, FPRC-1200 <sup>1</sup>
F	1:1 System, Input Splitter, RCP2-1100 <sup>1</sup>
G	1:1 Phase Combined system, Input Splitter, FPRC-1100 <sup>1</sup>
H	1:1 System, Input Switching, RCP2-1100 <sup>1</sup>

<sup>1</sup> Standard location for controller is directly above HPA1.

**Use and Disclosure of Data:** The items described herein are controlled by the U.S. Government and authorized for export only to the country of ultimate destination for use by the ultimate consignee or end-user(s) herein identified. They may not be resold, transferred, or otherwise disposed of, to any other country or to any person other than the authorized ultimate consignee or end-user(s), either in their original form or after being incorporated into other items, without first obtaining approval from the U.S. government or as otherwise authorized by U.S. law and regulations.

**Proprietary and Confidential:** The information contained in this document is the sole property of Teledyne Paradise Datacom. Any reproduction in part or as a whole without the written permission of Teledyne Paradise Datacom is prohibited.

Specifications are subject to change without notice.